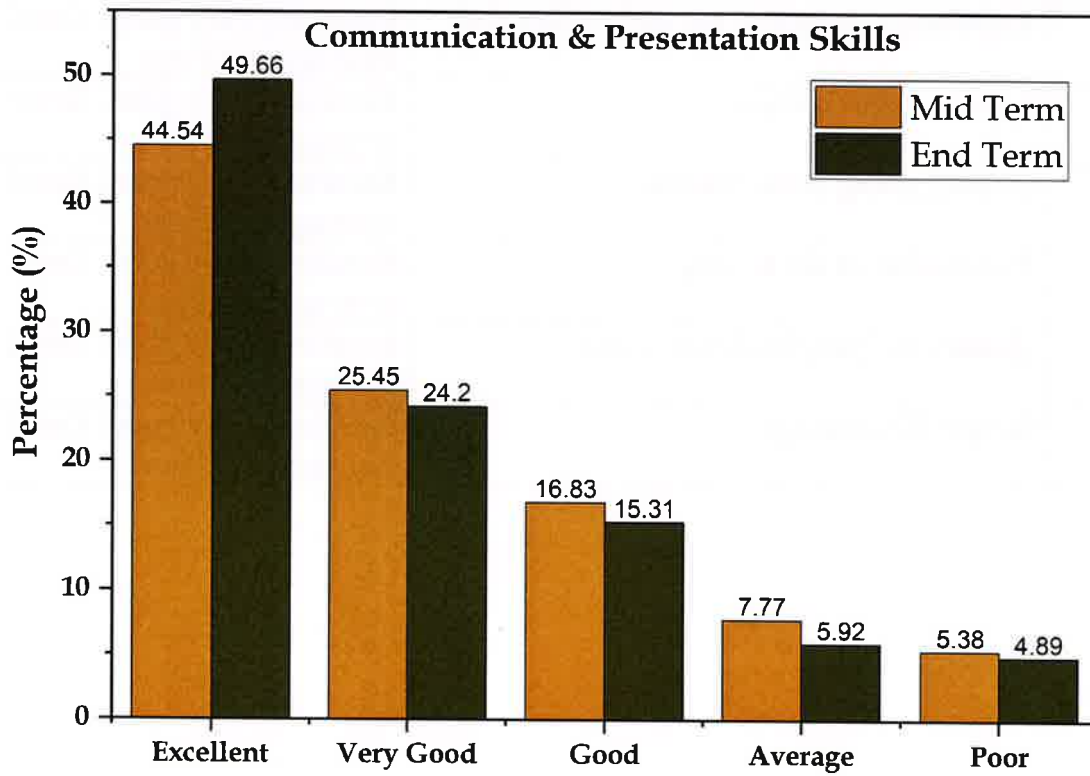
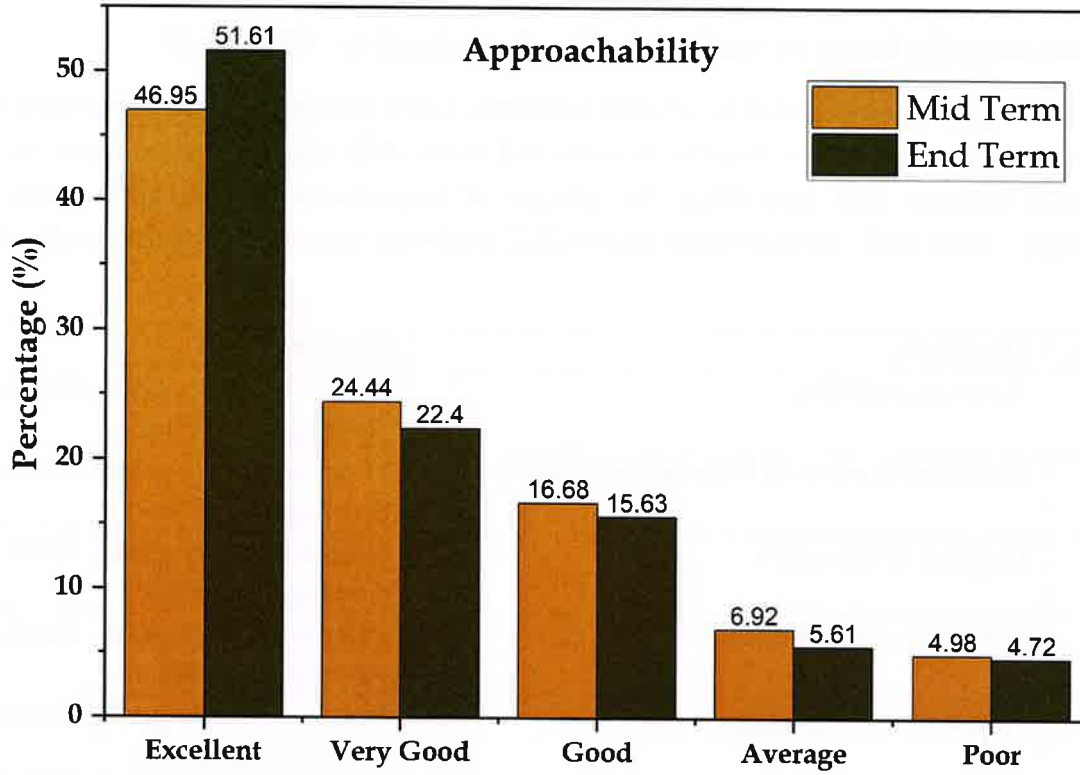
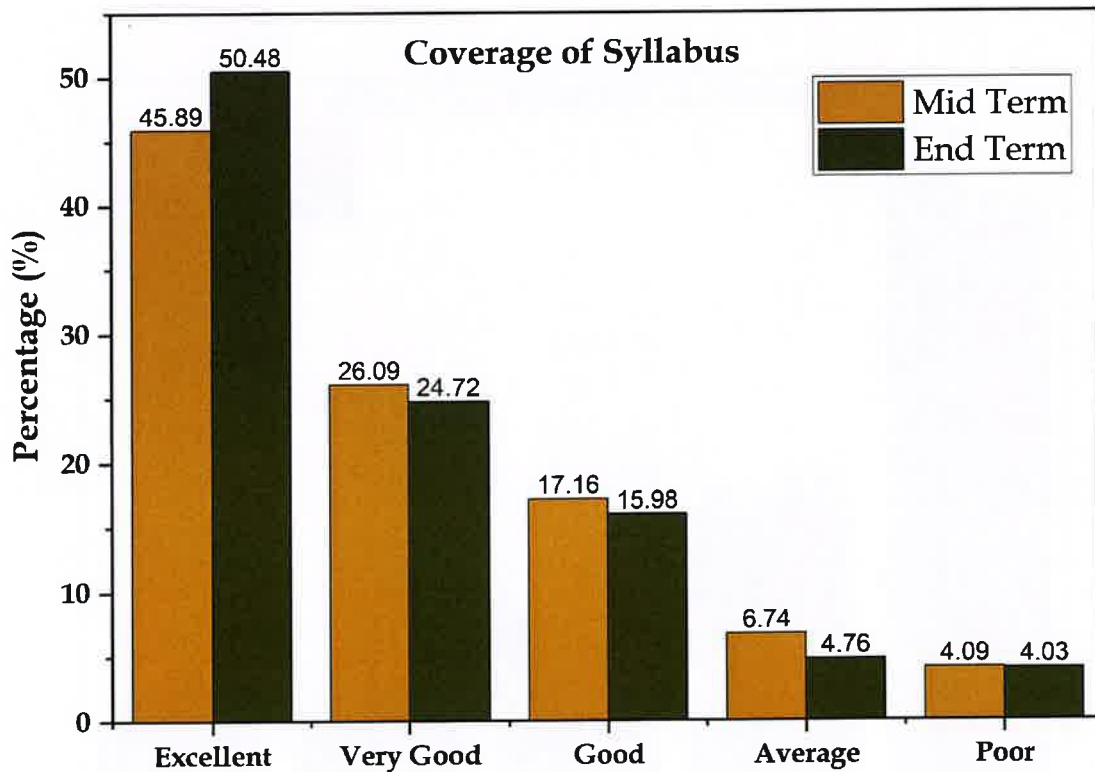
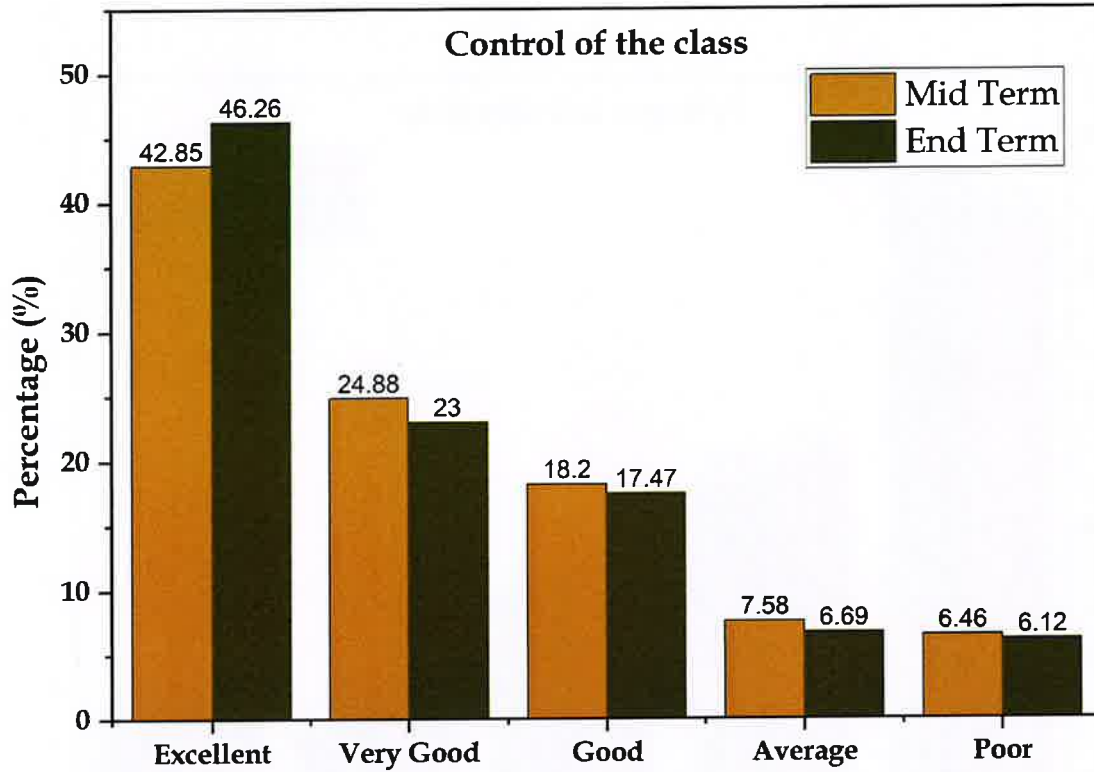


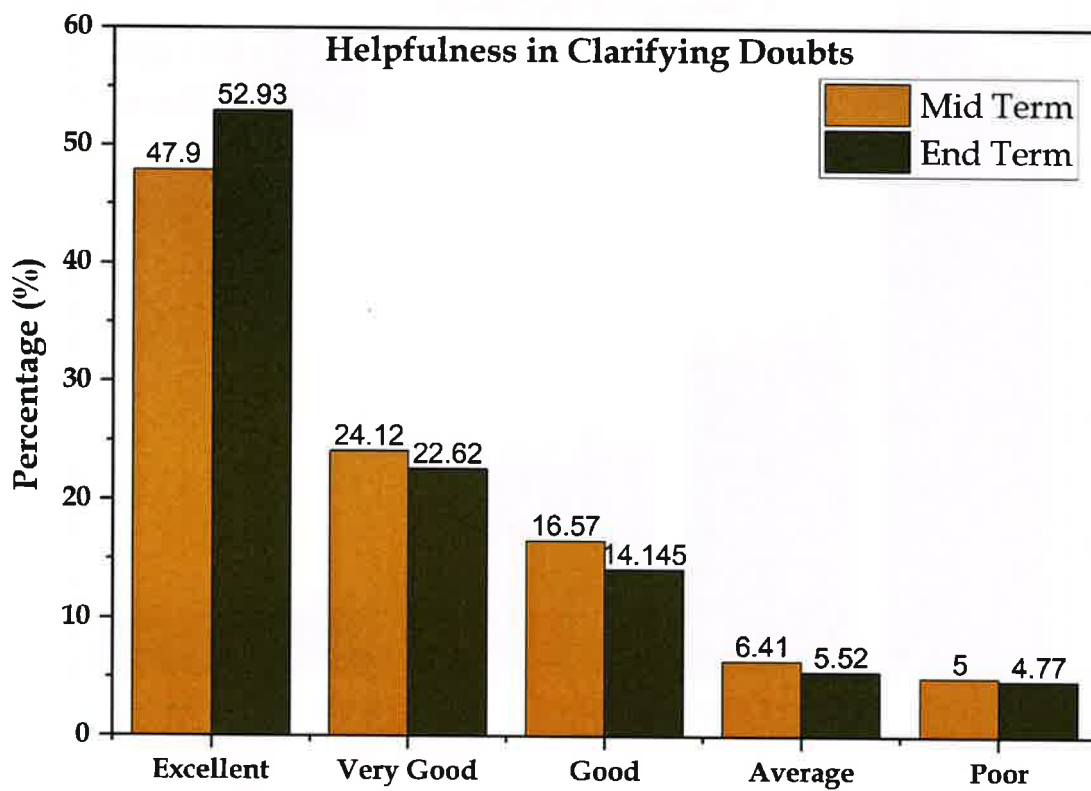
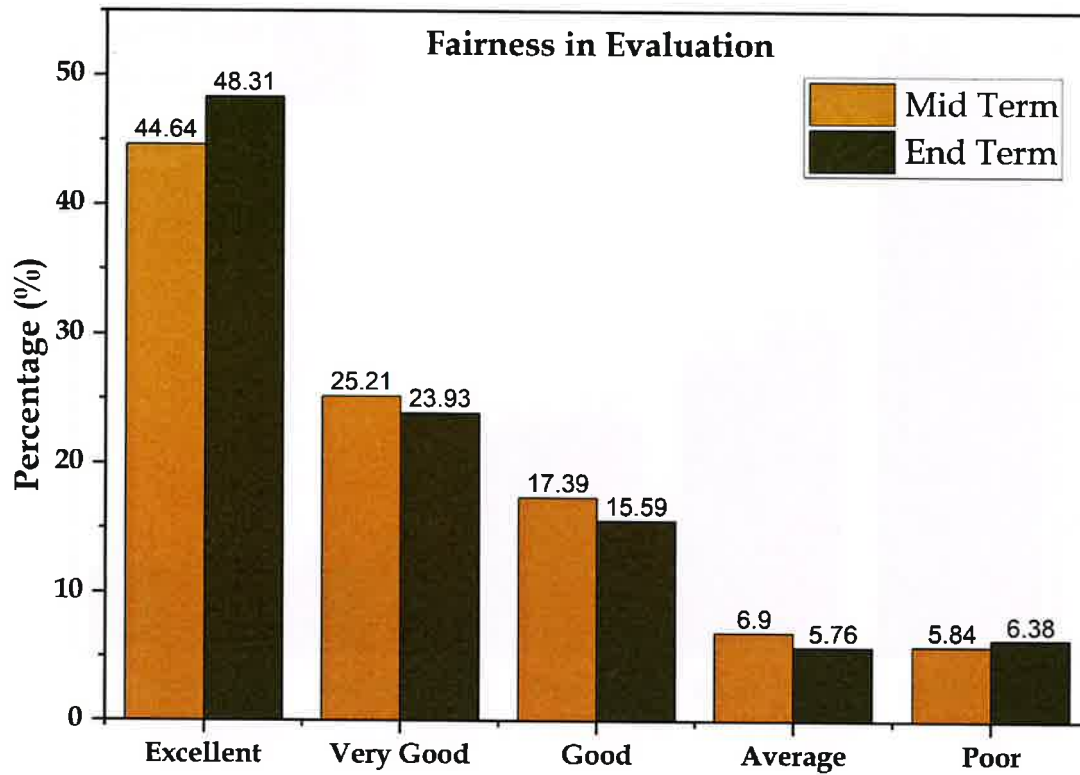
### Feedback Analysis based on student feedback received for AY 2019-20

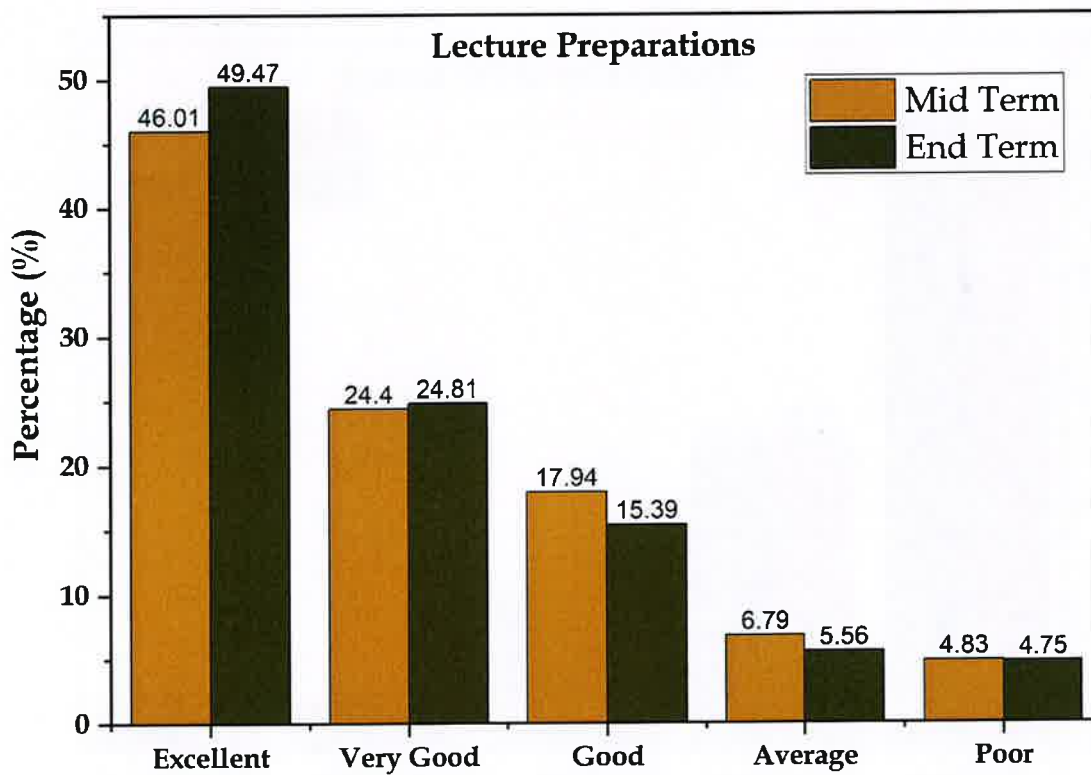
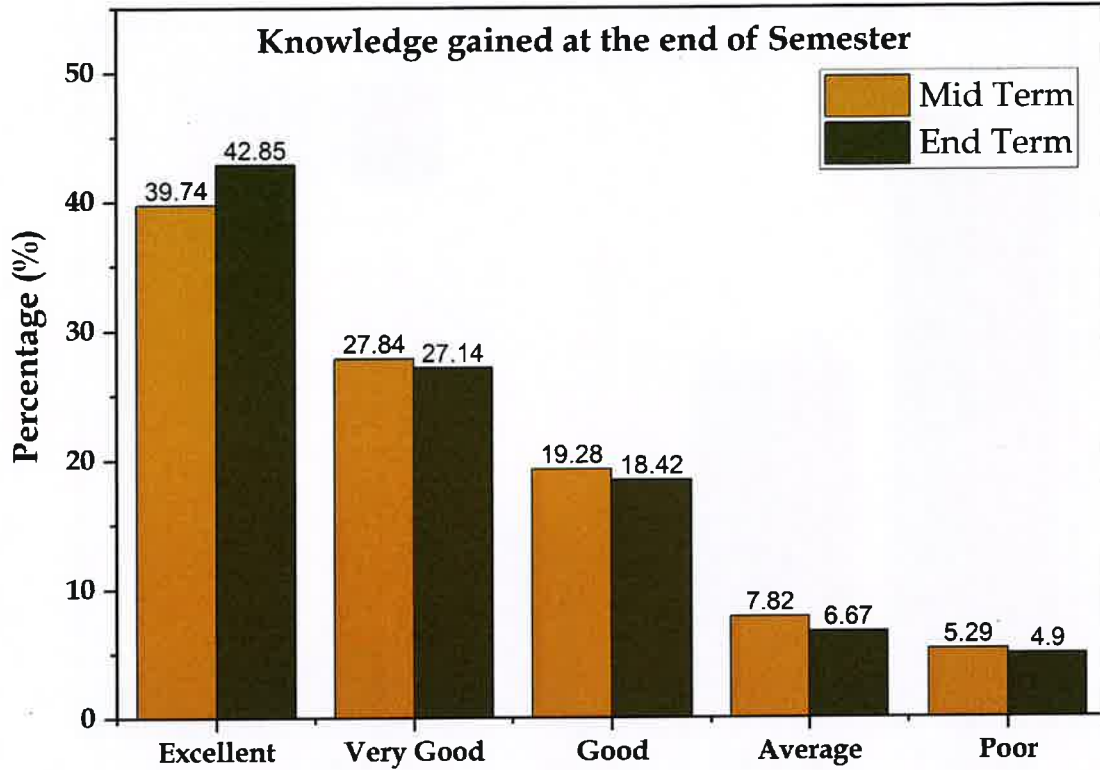
We have a regular mechanism to collect feedback from students in two intervals to enhance student experience. Feedback collected from 2058 students after their mid-term examinations and identified the places of improvement and action taken accordingly. After end – term examinations 2122 students responded for the feedback.

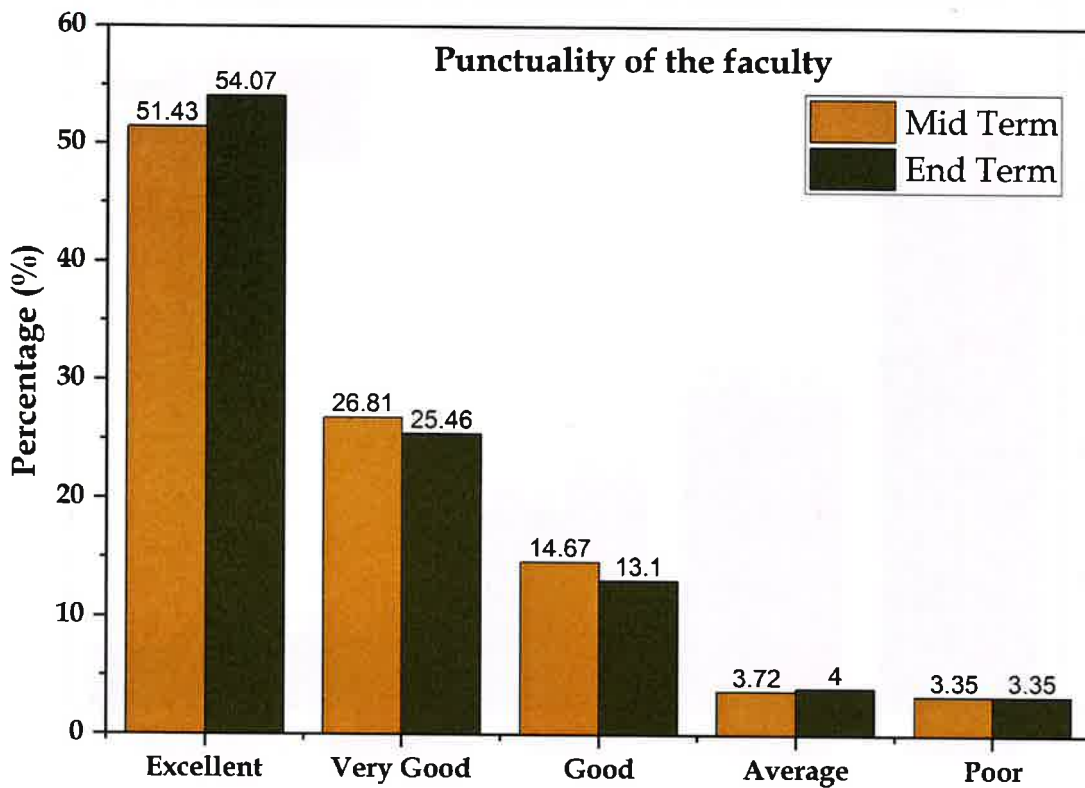
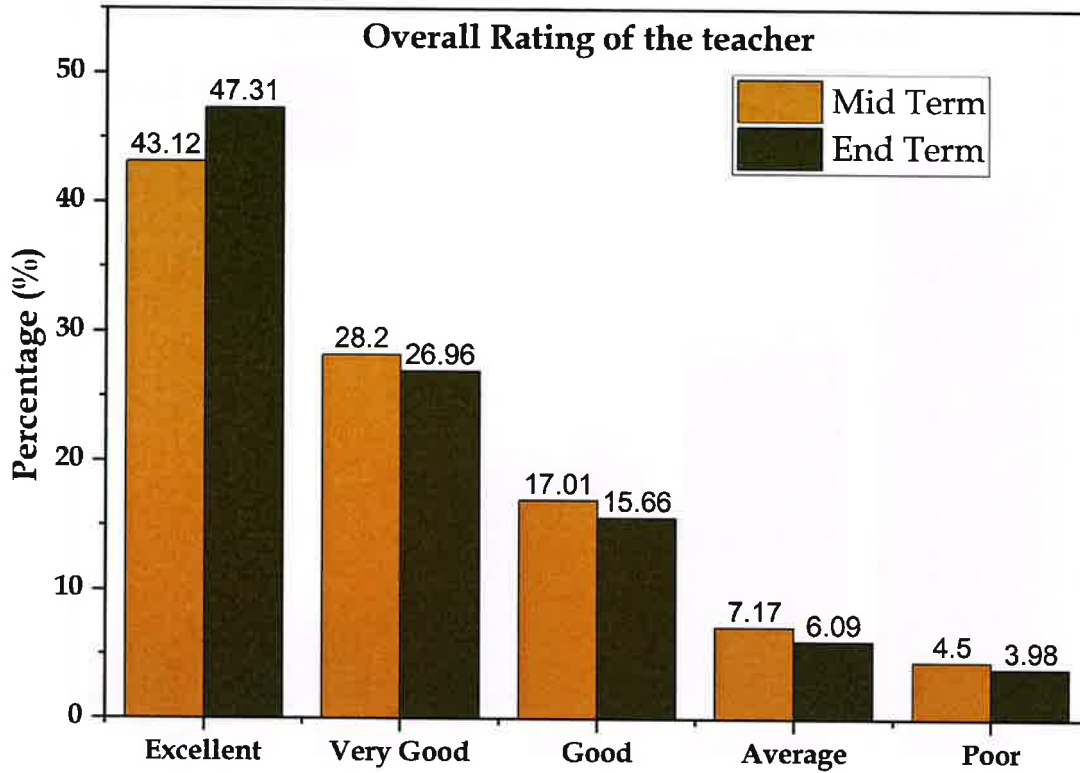
SI. No.	Question	Options
1	Approachability	Excellent, Very good, Good, Average and Poor
2	Communication & Presentation Skills	Excellent, Very good, Good, Average and Poor
3	Control of the class	Excellent, Very good, Good, Average and Poor
4	Coverage of Syllabus	Excellent, Very good, Good, Average and Poor
5	Fairness in Evaluation	Excellent, Very good, Good, Average and Poor
6	Helpfulness in Clarifying doubts	Excellent, Very good, Good, Average and Poor
7	Knowledge gained at the end of Semester	Excellent, Very good, Good, Average and Poor
8	Lecture Preparations	Excellent, Very good, Good, Average and Poor
9	Overall rating of the teacher	Excellent, Very good, Good, Average and Poor
10	Punctuality of the faculty	Excellent, Very good, Good, Average and Poor
11	Quality of Quiz/Mid-Sem Exam	Excellent, Very good, Good, Average and Poor
12	Subject Knowledge	Excellent, Very good, Good, Average and Poor

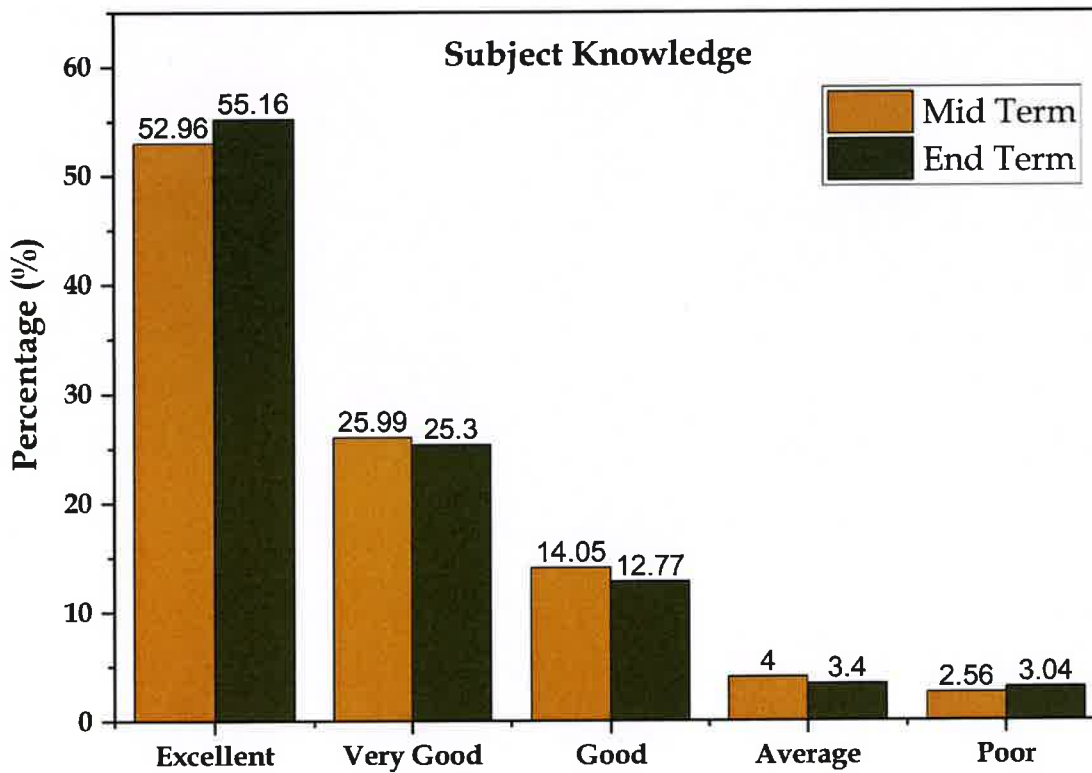
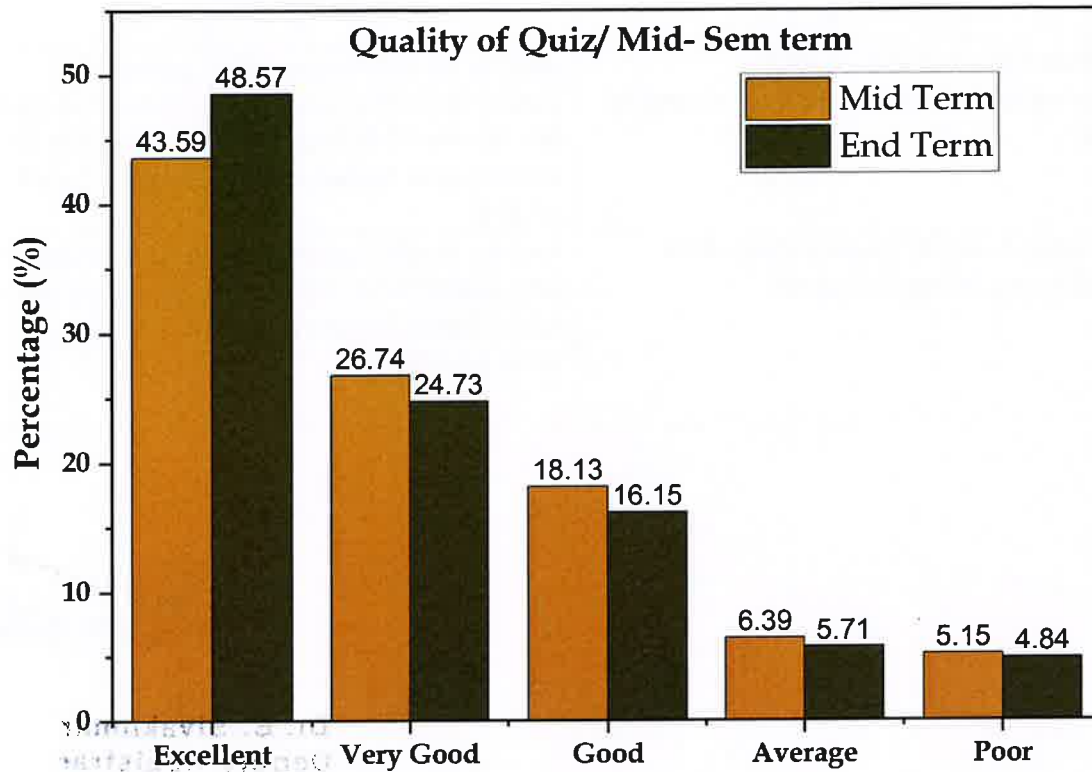












Remarks	Action taken
30% of students felt difficulty in approachability of faculty and clarifying the doubts.	Deputy Dean academics suggested the faculty to fix the consultation hours beyond the class work schedule for the students to interact and discuss about the subject and doubts.
Communication and presentation skills showed scope of improvement.	Faculty worked on preparing interactive presentations to help students understand better which in turn helps them to gain more knowledge.



Deputy Registrar

**Dr. B. Sivakumar**  
**Deputy Registrar**  
**SRM UNIVERSITY AP**  
**Amaravati, AP-522503**



**Faculty feedback on curriculum - 2019-20**

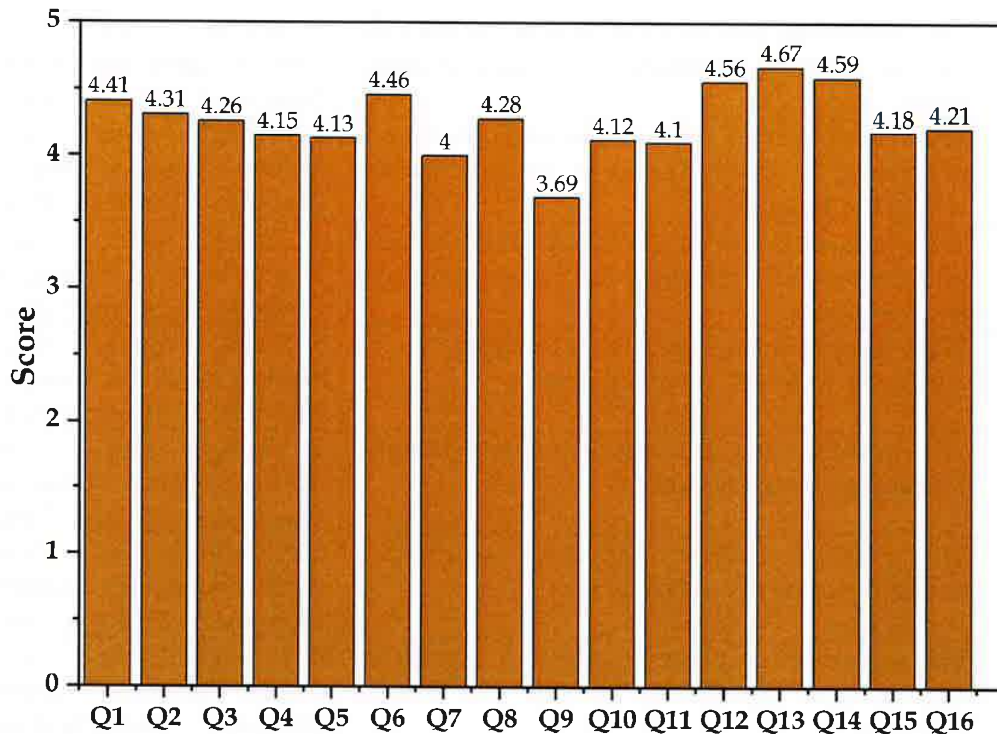
Every year, we will make the necessary changes to our curriculum based on the feedback we routinely receive from our faculty.

Feedback captured from 70 faculty members.

The feedback questionnaire is as below.

S. No.	Questions	Options
1	The curriculum provides a wide array of electives for the students to enhance their employability skills	5 - Strongly Agree, 4 - Agree, 3- Neither Agree nor Disagree, 2- Disagree, 1 - Strongly Disagree
2	The achievement of program learning outcomes is supported by the inclusion of various courses within the program	5 - Strongly Agree, 4 - Agree, 3- Neither Agree nor Disagree, 2- Disagree, 1 - Strongly Disagree
3	The assessment criteria effectively gauge student performance and identify areas for improvement in each course	5 - Strongly Agree, 4 - Agree, 3- Neither Agree nor Disagree, 2- Disagree, 1 - Strongly Disagree
4	The course material incorporates concepts conducive to self-directed learning	5 - Strongly Agree, 4 - Agree, 3- Neither Agree nor Disagree, 2- Disagree, 1 - Strongly Disagree
5	The course material includes illustrative examples to enhance comprehension	5 - Strongly Agree, 4 - Agree, 3- Neither Agree nor Disagree, 2- Disagree, 1 - Strongly Disagree
6	The syllabus outlines clear and well-defined course outcomes and objectives	5 - Strongly Agree, 4 - Agree, 3- Neither Agree nor Disagree, 2- Disagree, 1 - Strongly Disagree
7	The program curriculum places a significant emphasis on experiential learning and lifelong education	5 - Strongly Agree, 4 - Agree, 3- Neither Agree nor Disagree, 2- Disagree, 1 - Strongly Disagree
8	The level of student engagement and participation in your class is good	5 - Strongly Agree, 4 - Agree, 3- Neither Agree nor Disagree, 2- Disagree, 1 - Strongly Disagree
9	The course content has been tailored to align with industry requirements	5 - Strongly Agree, 4 - Agree, 3- Neither Agree nor Disagree, 2- Disagree, 1 - Strongly Disagree
10	The overall behaviour of students in your class is good	5 - Strongly Agree, 4 - Agree, 3- Neither Agree nor Disagree, 2- Disagree, 1 - Strongly Disagree
11	The overall academic performance of students in your class is good	5 - Strongly Agree, 4 - Agree, 3- Neither Agree nor Disagree, 2- Disagree, 1 - Strongly Disagree
12	The overall attendance rate in your class is good	5 - Strongly Agree, 4 - Agree, 3- Neither Agree nor Disagree, 2- Disagree, 1 - Strongly Disagree
13	The overall quality of the infrastructure and facilities available to support teaching and research is good	5 - Strongly Agree, 4 - Agree, 3- Neither Agree nor Disagree, 2- Disagree, 1 - Strongly Disagree

14	The university is committed to inclusivity and diversity which impacts the quality of the academic and work environment	5 - Strongly Agree, 4 - Agree, 3- Neither Agree nor Disagree, 2- Disagree, 1 - Strongly Disagree
15	The professional development opportunities and resources offered by the institution to enhance your teaching skills	5 - Strongly Agree, 4 - Agree, 3- Neither Agree nor Disagree, 2- Disagree, 1 - Strongly Disagree
16	There are opportunities for cross-disciplinary collaboration in teaching and learning initiatives	5 - Strongly Agree, 4 - Agree, 3- Neither Agree nor Disagree, 2- Disagree, 1 - Strongly Disagree



Feedback on curriculum from the faculty

Observation	Action taken
There is scope of improvement in terms of course content to align industry requirements	The course's components were revised with inclusion of latest industry requirements. Undergraduate research project components introduced to help the students to explore the industrial and societal needs.

  
 Dr. B. Srinivas Registrar  
 Deputy Registrar  
 SRM UNIVERSITY AP  
 Amaravati, AP-522503